

# Installation Manual for Flexible Joint ( Metal Sealing Type)

Z-13000



## Installation Procedure

### 1. Before installation

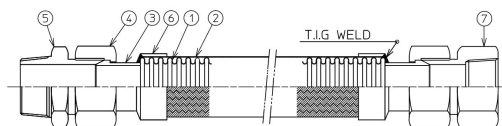


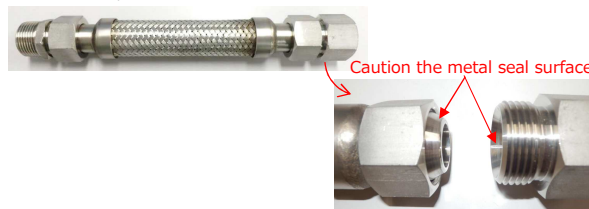
Table1 Part List

No.	Name	Material
①	Bellows	Stainless Steel 304
②	Braid	Stainless Steel 304
③	Sleeve	Carbon Steel or Stainless Steel 304
④	Nut	Carbon Steel or Stainless Steel 304
⑤	Male adaptor	Carbon Steel or Stainless Steel 304
⑥	Braid cover	Carbon Steel or Stainless Steel 304
⑦	Female adaptor	Carbon Steel or Stainless Steel 304

- Please confirm whether the diameter is correct.
- Please confirm whether there is any damage of sealing surface.

### 2. Installation

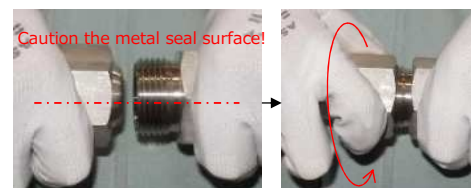
- 1) Remove the nipples of part numbers ⑤ and ⑦ from the product and wrap the sealing tape around the PT threads. At this time, be careful not to scratch the metal seal surface.



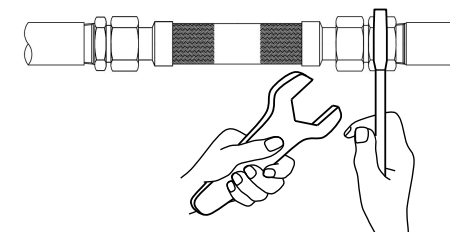
- 2) Tighten both nipples firmly onto the socket or thread on the pipe and equipment sides.



- 3) Tighten one side by hand, and the other side by hand in the same way. At this time, be careful not to scratch the metal seal surface. Also, the bag nut should be installed straight against the nipple.



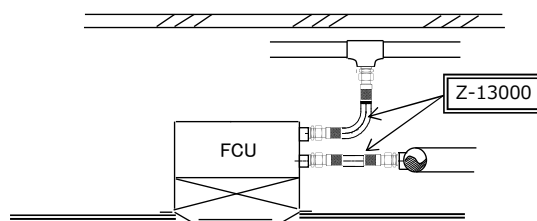
- 4) Finally, tighten the nut while holding the nipple in place with a wrench. Refer to the table below for tightening torque values when using a torque wrench.



### Tightening Torque

Size	Torque(N · m)
8A	55~65
10A	55~65
15A	60~75
20A	85~100
25A	110~120
32A	120~135
40A	145~160
50A	180~200

### Completion



### NOTES

- Where the water hammer generate in the piping system, the flexible joint might be damaged. Please do appropriate impact prevention measures.
- In case of corrosive fluid for stainless steel, ZTF series products (fluoro-resin bellows) are recommended
- Please carry out the welding work of the piping before installing the flexible joint. If you have to carry out the welding work after installing the flexible joint, take ground the welding electricity, also put a protective cover around the flexible joint so that the welding current does not flow into the piping system.
- When tightening the nut, be sure to hold the nipple with a wrench to prevent twisting of the flexible joint.
- Please select the pipe size not to exceed 3m/s of flow velocity. (inside diameter base)