

Installation Manual for the Stainless Expansion Joint

Z-18000



Installation Procedure

1. Before installation

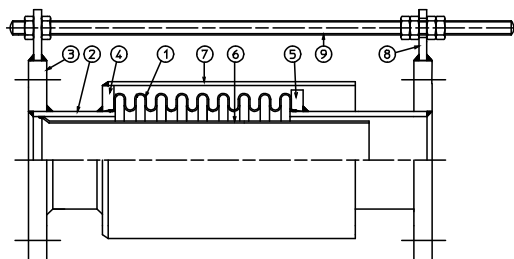
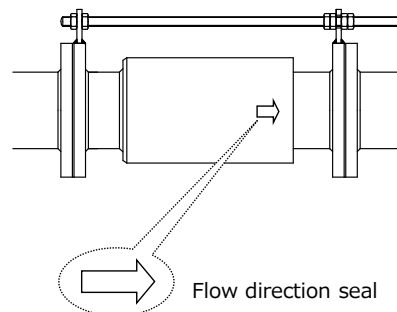


Table1 Parts List

No.	Name	Material
1	Bellows	Stainless steel 304
2	Pipe	Carbon steel
3	Flange	Carbon steel
4	Ring	Carbon steel
5	Ring	Carbon steel
6	Inner pipe	Stainless steel 304
7	Outer pipe	Carbon steel
8	Holder	Carbon steel
9	Tie-rod bolt	Carbon steel

- Please confirm whether the diameter is correct.
- Please confirm whether there is any damage of sealing surface.

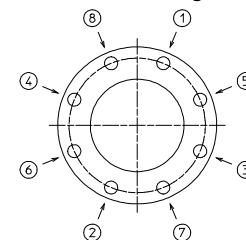
2. Installation



- ① Please check the flow direction seal before installation.
- ② Please install between the piping flanges not to move the gasket from the sealing surface and not to damage the sealing surface.

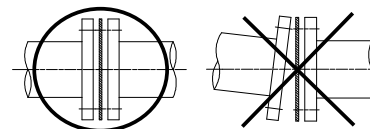
3. Tightening of the bolts

The order of bolt tightening.



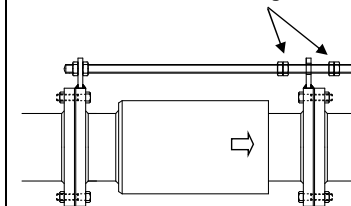
- ① Please tighten the bolts diagonally and equally.
- ② Please tighten the opposite side of flange with same way.
- ③ When you use the bolt and nut made of stainless steel, please apply lubrication.

⚠ Please confirm the flange face is parallel before tightening.



4. Removing of the set bolts

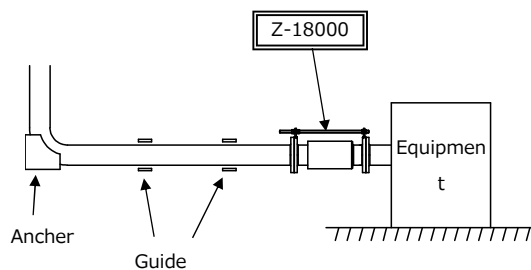
Move the double nut as indicated on the Tag.



After completing installation on the piping, move the nuts on the tie rod bolts into place.

※ The expansion joint will not function properly if the nut is not moved.

Completion



- Please install the expansion joint so that the piping weight does not affect to the product.
- Please prepare the guide so that the piping does not swing sideways.
- Please install the expansion joint so that the distance from the anchor to the product may be within 4 times of the pipe diameter.
- Please design the anchor to withstand thrust due to internal pressure and the reaction force of the bellows.

NOTES

- Please carry out the welding work of the piping before installing the product. If you have to carry out the welding work after installing the product, take ground the welding electricity, also put a protective cover around the product so that the welding current does not flow into the piping system.
- Please be careful not to scratch the seal surface during installation.
- Move the nuts on the tie rod bolts into place.
- When installing, please confirm the installation dimensions on the delivery drawings. If using the product as a preset, install it according to the installation dimensions, not the manufacturing dimensions.
- Insert the mounting bolts from the product side toward the piping side, and tighten them evenly on the diagonal lines to avoid one-sided tightening.
- If the product with an inner sleeve, please install it according to the "flow direction seal" attached to the product.