

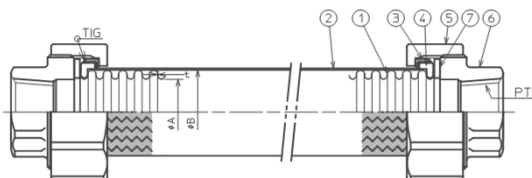
Installation Manual for the Flexible Joint (Union Connection)

Z-9000NW · Z-9000CAW · Z-10000NW



Installation Procedure

1. Before installation



The shape of Z-9000NW,Z-10000NW

Table1 Parts List

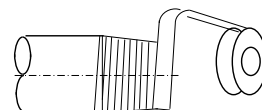
No.	Name	Material
1	Bellows	Stainless steel 304
2	Braid	Stainless steel 304
3	Ring cover	Stainless steel 304
4	Split ring	SCS13
5	Union nut	FCMB (SCS13)
6	Union screw	FCMB (SCS13)
7	Gasket	Non-asbestos

Material in () is Z-10000NW

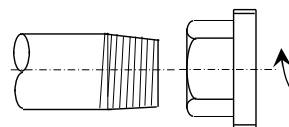
- Please confirm whether the diameter is correct.
- Please confirm whether there is any damage of sealing surface.

2. Installation

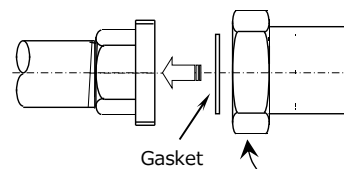
- ① Wrap teflon sealing tape on thread of pipe end.



- ② Tighten the union screw onto the pipe end by hand, then tighten it with tightening tool.



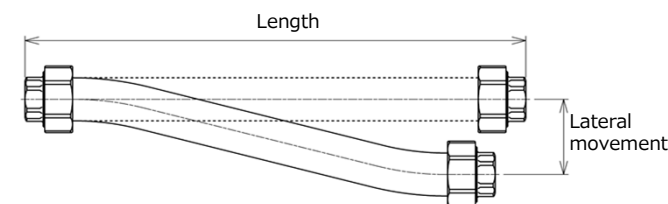
- ③ Confirm the gasket on sealing face before tightening, set the union nut to the union screw and tighten it manually.



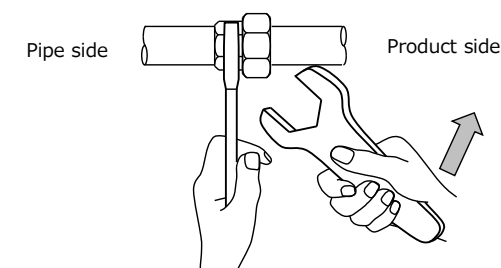
- ④ Carry out the opposite side as same way.

3. Tightening union nut

- ① Please confirm whether the lateral movement of piping is within the allowable range.



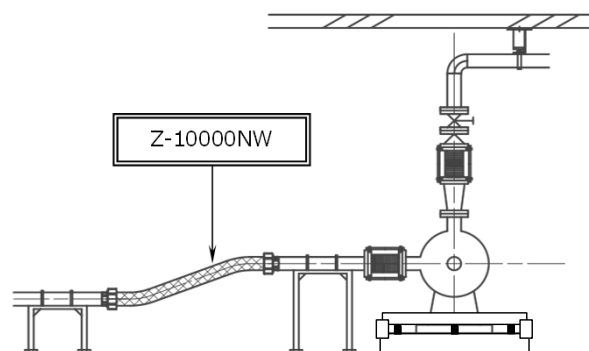
- ② After tightening the union nut by hand, tighten it with tightening tool while holding the union screw in place. Be careful not to twist the flexible tube body.



Tightening Torque

Size	Torque(N · m)
10A	40~45
15A	59~64
20A	79~84
25A	98~108
32A	118~128
40A	147~157
50A	196~206

Completion



NOTES

- Where the water hammer generate in the piping system, the flexible joint might be damaged. Please do appropriate impact prevention measures. Moreover, the use of Z-3000 composed of the tube for the vibrational absorption is recommended.
- Please carry out the welding work of the piping before installing the flexible joint. If you have to carry out the welding work after installing the flexible joint, take ground the welding electricity, also put a protective cover around the flexible joint so that the welding current does not flow into the piping system.
- Please select the pipe size not to exceed 3m/s of flow velocity. (inside diameter base)
- In case of corrosive fluid for stainless steel, ZTF series products (fluoro-resin bellows) are recommended
- Union screws and gaskets are exclusive items. Be sure to use the supplied union screw and gasket.
- Non asbestos joint gasket that normally attached on sealing face is not applied for steam line. Please use our steam gaskets for steam line.