

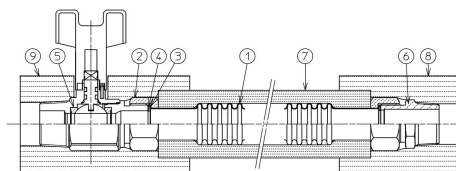
# Installation Manual for the Flexible Tube

## Wonder Tube with Insulation



### Installation Procedure

#### 1. Before installation



The shape of Wonder Tube with Insulation

Table1 Parts List

No.	Name	Material
1	Tube	Stainless steel 316L
2	Nut	Brass
3	Ring sheet	PTFE
4	Gasket	Joint sheet without asbestos
5	Valve	Brass
6	Nipple	Brass
7	Insulation(Body)	Nitrile foam rubber
8	Insulation(Nipple)	Nitrile foam rubber
9	Insulation(Valve)	Nitrile foam rubber

※1 vinyl tape is included

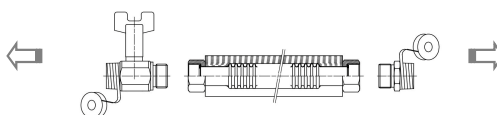
- Please confirm whether the diameter is correct.
- Please confirm whether there is any damage of sealing surface.

#### 2. Installation

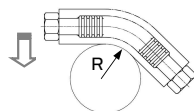
- ① Remove the insulation from the nipple and valve that are temporarily fastened, loosen the nuts on both ends that are temporarily tightened, and remove the nipple and valve.

**!** Keep the packing in a safe place until time to install the nut. Do not remove the insulation from the main body.

- ② Wrap sealing tape around the tapered thread of the nipple and valve and screw it into the primary and secondary piping sides by hand, then tighten it firmly with a wrench or the like.



- ③ Bent the tube in predetermined form. At that time, observe the minimum bending radius shown in the table below.



Size	Min. bending radius R (mm)
1"	75

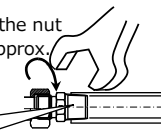
**!** Please avoid a partial bend such as pulling, compression, twisting and kinking.

- ④ Please confirm the gasket is fitted and set the nut in the piping side screw. The nut shall be tightened by hand. The other side shall be tightened similarly.

#### 3. Tightening of the nuts

Hold the tube by hand not to move and tighten the nut by hand. After that, use a spanner and turn it approx. 1/4~1/3 rotation not to twist the tube.

Please be careful of not to turn the nipple or valve of a connection together with the

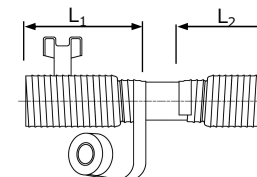


When using a torque wrench, tighten the bolts according to the values in the table on the right.

Size	Torque
1"	29.4N · m

#### 4. Tape wrapping at both ends of insulation

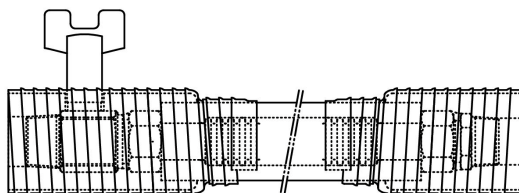
- ① Completely remove dust, moisture, oil, etc. from the surface of the insulation.
- ② Cover the nipple and valve insulation with the nipple and valve, align the joints tightly, and spiral wrap with the vinyl tape provided.



Place Size	L <sub>1</sub> (mm)	L <sub>2</sub> (mm)
1"	130	100

**!** Spiral wrapping with half overlap is recommended.

#### Completed drawing of insulation application



#### ! NOTES

- Where the water hammer generate in the piping system, the flexible joint might be damaged. Please do appropriate impact prevention measures.
- Please carry out the welding work of the piping before installing the flexible joint. If you have to carry out the welding work after installing the flexible joint, take ground the welding electricity, also put a protective cover around the flexible joint so that the welding current does not flow into the piping system.
- Please select the pipe size not to exceed 3m/s of flow velocity. (inside diameter base)
- In case of corrosive fluid for stainless steel, ZTF series products (fluoro-resin bellows) are recommended
- When tightening the nut, be careful not to twist the product.