

1. Applications and Features

Purpose	Ground subsidence and Earthquake countermeasures
Location	Rain water and sewage water pipe line and agricultural water pipe line
Features	<p>This flexible joint made of PVC exclusively for rainwater and drainage.</p> <p>The smooth inner surface allows drainage to flow smoothly.</p> <p>The special structure of the tube body absorbs displacement and expansion/contraction.</p> <p>Can be used for underground piping.</p>

2. Structure and Parts

Figure 1 shows the structure, and Table 1 shows the part names and materials.

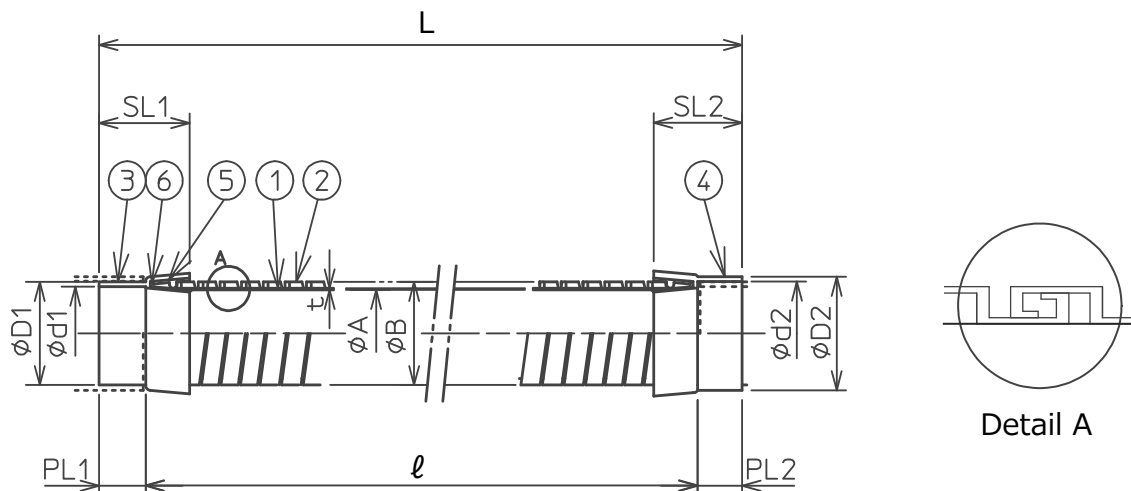


Figure 1 . Structure

Table1. Parts List

No.	Name	Material
1	Inner tube	Soft PVC
2	Outer tube	Hard PVC
3	Insert sleeve	Hard PVC
4	Socket	Hard PVC
5	Lock ring	Hard PVC
6	Seal rubber	Synthetic rubber

※Both end socket type is also available.

※Both end TS-Flange type is also available.

3. Various dimensions

Table 2 shows various dimensions.

Table 2. Various dimensions

Unit : mm

Size	Tube			Insert sleeve				Socket				L (ℓ)
	φ A	φ B	t	φ D1	φ d1	PL1	SL1	φ D2	φ d2	PL2	SL2	
50A	57.0	69.0	1.1	60.0	54.5	30.0	60.0	66.6	60.0	25.0	55.0	455 (400)
75A	83.0	96.0	1.2	89.0	83.5	40.0	79.0	97.0	89.0	40.0	79.5	580 (500)
100A	107.0	123.0	1.4	114.0	108.0	50.0	90.0	124.0	114.0	50.0	89.0	700 (600)
125A	129.5	147.5	1.5	140.0	131.5	70.0	110.0	150.0	140.0	65.0	79.5	935 (800)
150A	153.5	174.0	1.6	165.0	155.0	84.5	130.1	172.0	165.0	80.0	125.0	1164.5 (1000)

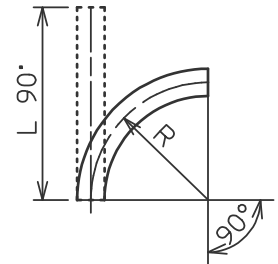
※Product length (L) that can be manufactured is up to 4000L.

4. Bending radius and necessary product required length (ℓ 90°)

Table 3 shows bending radius and necessary product required length.

Table3. Bending radius and necessary product required length

Size	Bending radius (R) (mm)	Product Length (L 90°) (mm)
50A	320 以上	510±15
75A	490 以上	770±25
100A	590 以上	930±30
125A	650 以上	1030±40
150A	760 以上	1200±50



5. Required effective length for each displacement

Table 4 shows required effective length for each displacement.

Table 4. Required effective length for each displacement

Unit : mm

Size	Displacement							
	100	200	300	400	500	600	700	800
50A	600	700	750	800	1000	1200	1300	1500
75A	650	700	800	900	1000	1200	1300	1500
100A	700	800	900	1000	1200	1300	1500	1600
125A	800	1000	1300	1500	1600	1700	1800	2000
150A	1000	1200	1400	1600	1800	1900	2000	2200

6. Applicable temperature range

Max40℃

7. Inspection

Inspection items : Visual inspection, Dimensional inspection (Overall length),
Leak inspection

Frequency : Visual and dimensional inspection are all products.

Leakage inspections are sampling inspections.

8. Notes

- This product is for rainwater and drainage only.

Do not use this product for piping where pressure is generated.

- Install in accordance with the “upstream sticker” affixed to the product.

- Before installing the adhesive connection, check the compatibility of the product with the pipe or fitting to be connected.

- When burying, remove debris, crushed stones, or anything else that could damage the main body.

Do not damage the main body when compacting soil.

- Do not install in a compressed or pulled condition or apply excessive bending.

- Please refer to the “Installation Instructions” for installation procedures.