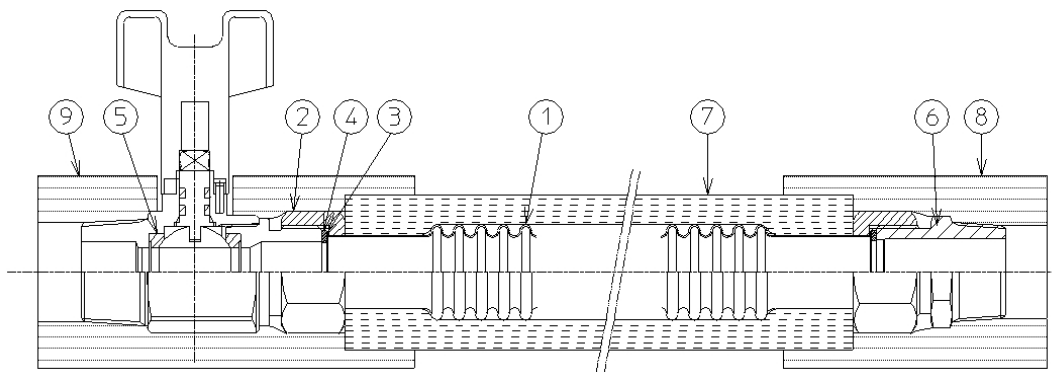


## 1. Applications and Features

Purpose	Gap adjustment of plumbing
Location	Around air conditioning equipment such as fan coils
Features	There is no need to arrange the thermal insulation on site because it is already set, valve × nipple type and double-ended nipple type are available. Flexible tube can be selected from Wonder Tube, Wonder Tube Ring Type, and Wonder Braid.

## 2. Structure and Parts

Figure 1 shows the structure, and Table 1 shows the part names and materials.



※Figure shows Wonder tube nipple x valve type

Figure 1 . Structure

Table1. Parts List

No.	Name	Material (Option)
1	Tube	Stainless steel 316L
2	Nut	Brass (Bronze)
3	Ring sheet	PTFE
4	Gasket	Joint sheet without asbestos (NBR · EPDM · PTFE)
5	Valve	Brass (Bronze)
6	Nipple	Brass (Bronze)
7	Thermal insulation (Main body)	Nitrile foam rubber
8	Thermal insulation (Nipple)	Nitrile foam rubber
9	Thermal insulation (Valve)	Nitrile foam rubber

※Thermal insulation for nipples and valves is only available for 20A.  
15A and 25A are only thermal insulation for the main body.

3. Applicable temperature range  
0℃~90℃

4. Inspection

Inspection items : Visual inspection, Dimensional inspection (Overall length),  
Leak inspection

Frequency : ALL

5. Notes

- Where the water hammer generate in the piping system, the flexible joint might be damaged.  
Take appropriate impact prevention measures.
- Carry out the welding work of the piping before installing the flexible joint.  
If you have to carry out the welding work after installing the flexible joint, take ground the welding electricity, also put a protective cover around the flexible joint so that the welding current does not flow into the piping system.
- Please select the pipe size not to exceed 3m/s of flow velocity.
- When tightening the nut, be careful not to twist the product.
- Please refer to the "Installation Instructions" for installation procedures.